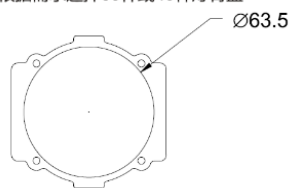


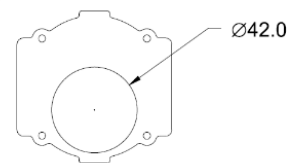
30W - KS.RL30D



根据需求选择60杆或40杆灯臂盖



60杆灯臂盖支持60杆



40杆灯臂盖支持40杆

Features:

- ◆ All aluminum housing for the heat dissipating greatly extends the life span of lighting source.
- ◆ Free of dust and water, suitable for outdoor.
- ◆ Use high quality power supply for long life time.
- ◆ Ultrathin design, convenient for storage, transportation and maintenance.
- ◆ Baking powder technology, bright and fade eventually becoming less susceptible to corrosion.

Application:

- ◆ Widely used in roads, highways, elevated roads, squares, schools, parks, etc.



Technical Parameters (Single Color):

Light Source: High Power LED
 Brand: PHILIPS 3030/Epistar 3030 Power: 1W
 Qty: 24PCS
 Maximum Power: 30W
 LED Color: Warm White, Neutral White, Pure White
 Beam Angle: 140°75°
 Lumen: 90-110lm/w
 CRI: 70 Ra or 80 Ra
 Input Voltage: AC90~305V/50-60Hz
 Drive Mode: Constant Current Drive
 Power Cable: 3*1.0 Rubber Cable
 IP Rate: IP65
 Environment Temperature: -20°C~50°C
 Storage Temperature: -40°C~70°C
 Life Span: ≥50000 hrs

Structure Parameter:

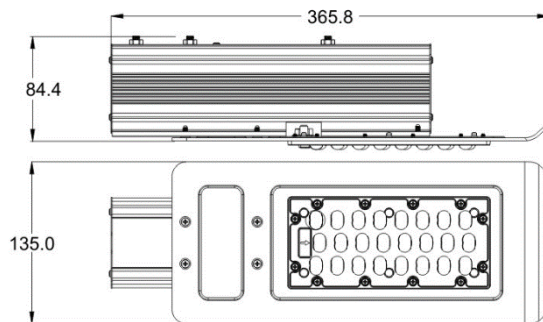
Lamp Body: Aluminum lamp body casting / surface high temperature coating
 Cover Material: PC Lens

Packing Details:

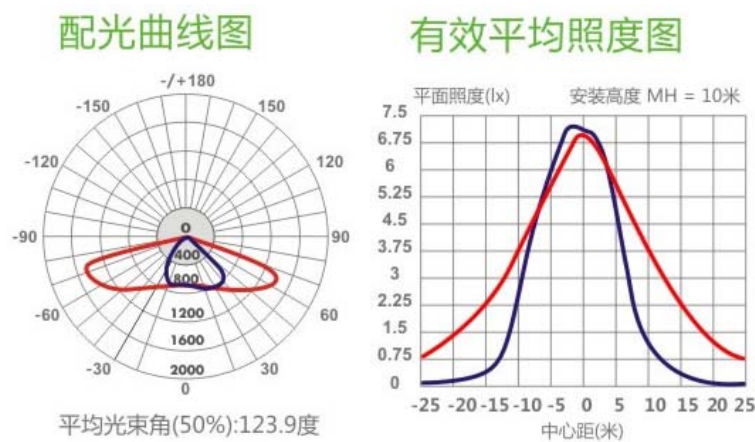
Carton: 41.5*19*14.5, 0.115M³
 Material: K=K
 Qty: 1PCS/CTN
 G.W: 2.4KG

30W - KS.RL30D

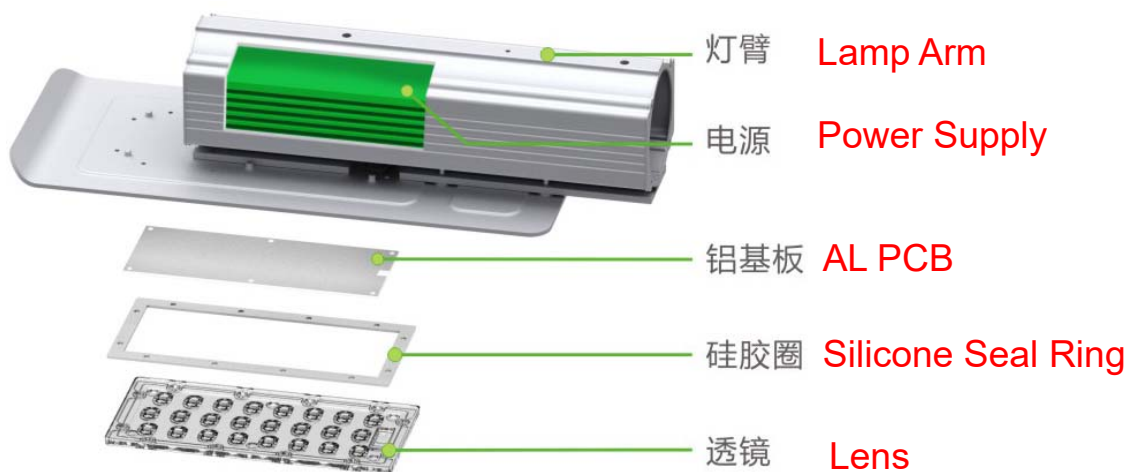
Product Dimension



Light Distribution



Product Structure



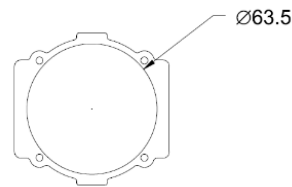
Optional Product Specifications

Item	Name	Model No.	Voltage	Power	Color	LED Qty	Beam Angle
1	LED Street Light	KS.RL.D.30.W.00A	AC90-305V	30W	2800-3200K	24	140*75°
2	LED Street Light	KS.RL.D.30.N.00A	AC90-305V	30W	3750-4750K	24	140*75°
3	LED Street Light	KS.RL.D.30.P.00A	AC90-305V	30W	5500-6500K	24	140*75°

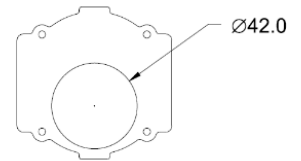
40W - KS.RL40D



根据需求选择60杆或40杆灯臂盖



60杆灯臂盖支持60杆



40杆灯臂盖支持40杆

Features:

- ◆ All aluminum housing for the heat dissipating greatly extends the life span of lighting source.
- ◆ Free of dust and water, suitable for outdoor.
- ◆ Use high quality power supply for long life time.
- ◆ Ultrathin design, convenient for storage, transportation and maintenance.
- ◆ Baking powder technology, bright and fade eventually becoming less susceptible to corrosion.

Application:

- ◆ Widely used in roads, highways, elevated roads, squares, schools, parks, etc.



Technical Parameters (Single Color):

Light Source: High Power LED

Brand: PHILIPS 3030/Epistar 3030 Power: 1W

Qty: 36PCS

Maximum Power: 40W

LED Color: Warm White, Neutral White, Pure White

Beam Angle: 150°80°

Lumen: 90-110lm/w

CRI: 70 Ra or 80 Ra

Input Voltage: AC90~305V/50-60Hz

Drive Mode: Constant Current Drive

Power Cable: 3*1.0 Rubber Cable

IP Rate: IP65

Environment Temperature: -20°C~50°C

Storage Temperature: -40°C~70°C

Life Span: ≥50000 hrs

Structure Parameter:

Lamp Body: Aluminum lamp body casting / surface high temperature coating

Cover Material: PC Lens

Packing Details:

Carton: 41.5*19*14.5, 0.115M³

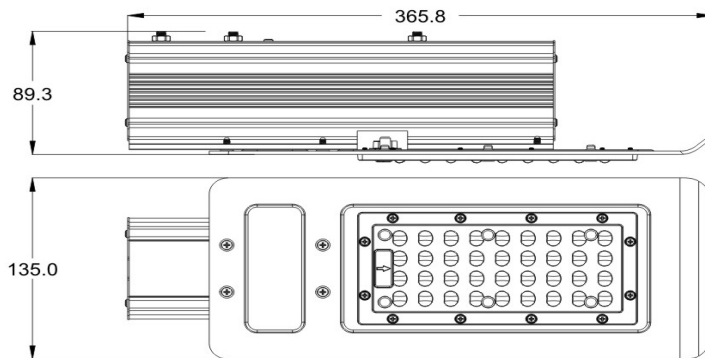
Material: K=K

Qty: 1PCS/CTN

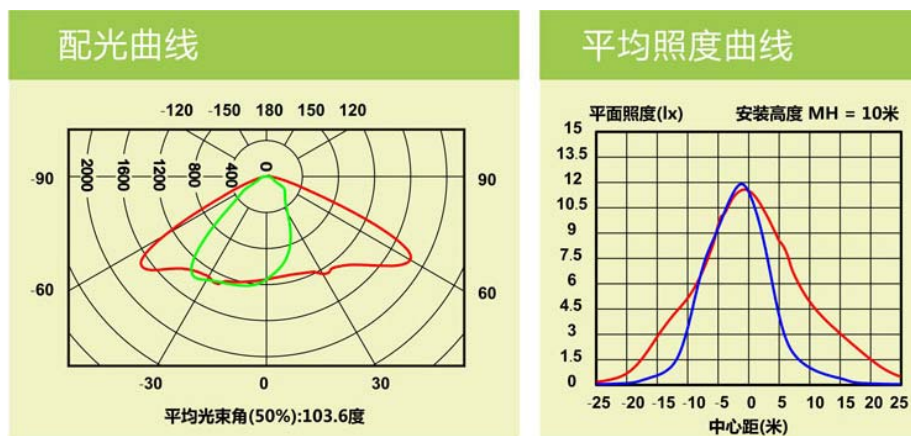
G.W: 2.5KG

40W - KS.RL40D

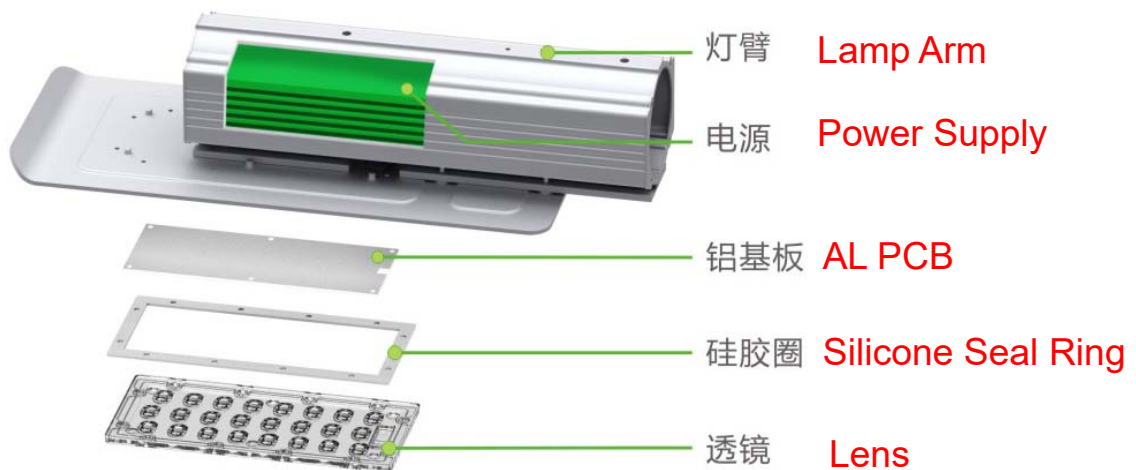
Product Dimension



Light Distribution



Product Structure



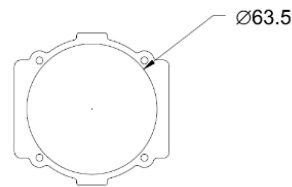
Optional Product Specifications

Item	Name	Model No.	Voltage	Power	Color	LED Qty	Beam Angle
1	LED Street Light	KS.RL.D.40.W.00A	AC90-305V	40W	2800-3200K	36	150°80°
2	LED Street Light	KS.RL.D.40.N.00A	AC90-305V	40W	3750-4750K	36	150°80°
3	LED Street Light	KS.RL.D.40.P.00A	AC90-305V	40W	5500-6500K	36	150°80°

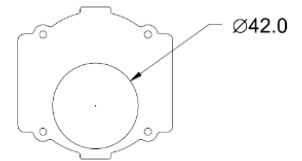
60W - KS.RL60D



根据需求选择60杆或40杆灯臂盖



60杆灯臂盖支持60杆



40杆灯臂盖支持40杆

Features:

- ◆ All aluminum housing for the heat dissipating greatly extends the life span of lighting source.
- ◆ Free of dust and water, suitable for outdoor.
- ◆ Use high quality power supply for long life time.
- ◆ Ultrathin design, convenient for storage, transportation and maintenance.
- ◆ Baking powder technology, bright and fade eventually becoming less susceptible to corrosion.

Application:

- ◆ Widely used in roads, highways, elevated roads, squares, schools, parks, etc.



Technical Parameters (Single Color):

Light Source: High Power LED

Brand: PHILIPS 3030/Epistar 3030 Power: 1W

Qty: 54PCS

Maximum Power: 60W

LED Color: Warm White, Neutral White, Pure White

Beam Angle: 150°80°

Lumen: 90-110lm/w

CRI: 70 Ra or 80 Ra

Input Voltage: AC90~305V/50-60Hz

Drive Mode: Constant Current Drive

Power Cable: 3*1.0 Rubber Cable

IP Rate: IP65

Environment Temperature: -20°C~50°C

Storage Temperature: -40°C~70°C

Life Span: ≥50000 hrs

Structure Parameter:

Lamp Body: Aluminum lamp body casting / surface high temperature coating

Cover Material: PC Lens

Packing Details:

Carton: 47.5*21.5*14.5, 0.148M³

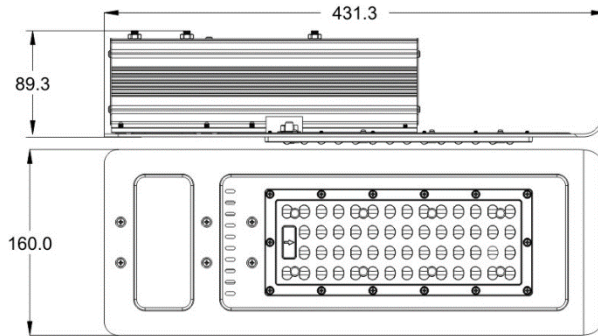
Material: K=K

Qty: 1PCS/CTN

G.W: 2.7KG

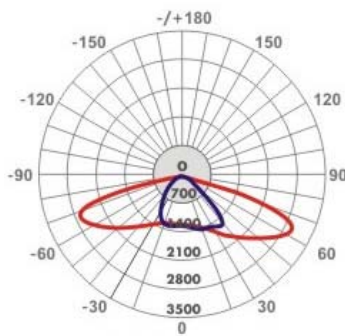
60W - KS.RL60D

Product Dimension



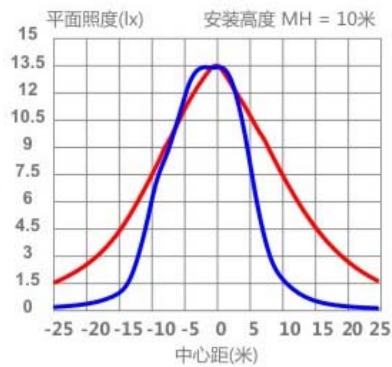
Light Distribution

配光曲线图

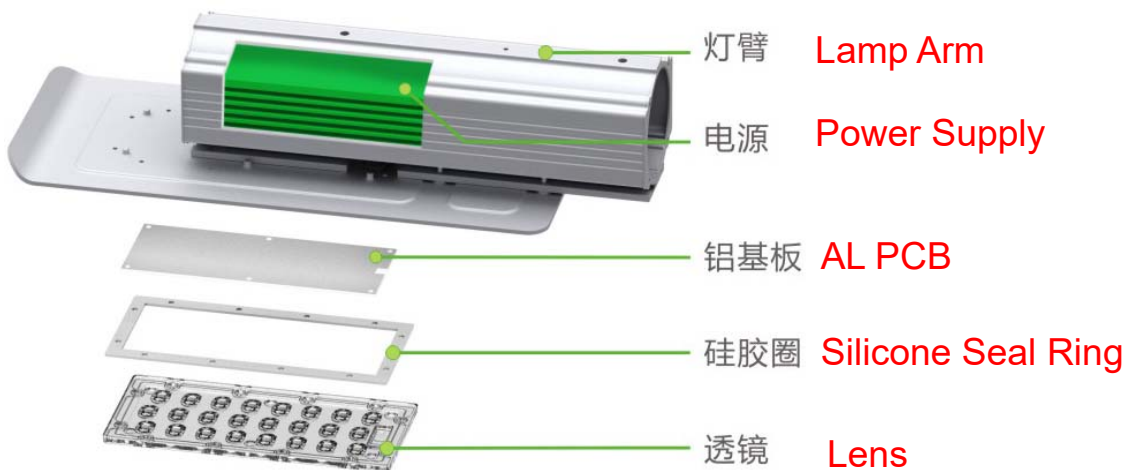


平均光束角(50%):120.7度

有效平均照度图



Product Structure



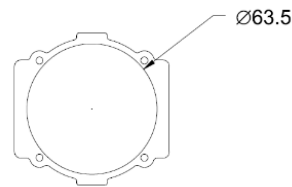
Optional Product Specifications

Item	Name	Model No.	Voltage	Power	Color	LED Qty	Beam Angle
1	LED Street Light	KS.RL.D.60.W.00A	AC90-305V	60W	2800-3200K	54	150*80°
2	LED Street Light	KS.RL.D.60.N.00A	AC90-305V	60W	3750-4750K	54	150*80°
3	LED Street Light	KS.RL.D.60.P.00A	AC90-305V	60W	5500-6500K	54	150*80°

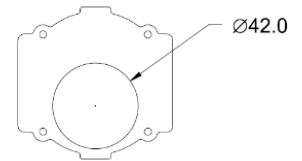
90W - KS.RL90D



根据需求选择60杆或40杆灯臂盖



60杆灯臂盖支持60杆



40杆灯臂盖支持40杆

Features:

- ◆ All aluminum housing for the heat dissipating greatly extends the life span of lighting source.
- ◆ Free of dust and water, suitable for outdoor.
- ◆ Use high quality power supply for long life time.
- ◆ Ultrathin design, convenient for storage, transportation and maintenance.
- ◆ Baking powder technology, bright and fade eventually becoming less susceptible to corrosion.

Application:

- ◆ Widely used in roads, highways, elevated roads, squares, schools, parks, etc.



Technical Parameters (Single Color):

Light Source: High Power LED

Brand: PHILIPS 3030/Epistar 3030 Power: 1W

Qty: 77PCS

Maximum Power: 90W

LED Color: Warm White, Neutral White, Pure White

Beam Angle: 150°80°

Lumen: 90-110lm/w

CRI: 70 Ra or 80 Ra

Input Voltage: AC90~305V/50-60Hz

Drive Mode: Constant Current Drive

Power Cable: 3*1.0 Rubber Cable

IP Rate: IP65

Environment Temperature: -20°C~50°C

Storage Temperature: -40°C~70°C

Life Span: ≥50000 hrs

Structure Parameter:

Lamp Body: Aluminum lamp body casting / surface high temperature coating

Cover Material: PC Lens

Packing Details:

Carton: 47.5*21.5*14.5, 0.148M³

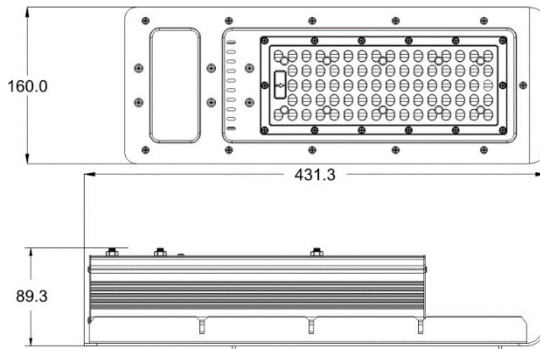
Material: K=K

Qty: 1PCS/CTN

G.W: 2.4KG

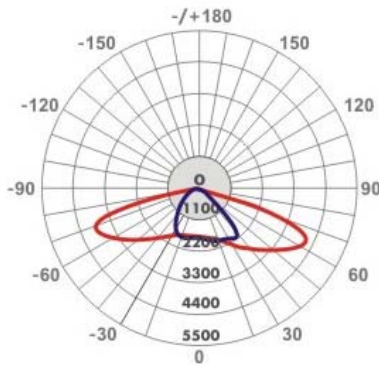
90W - KS.RL90D

Product Dimension

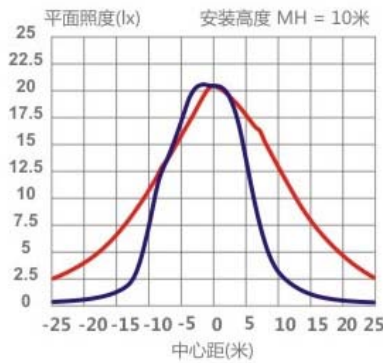


Light Distribution

配光曲线图

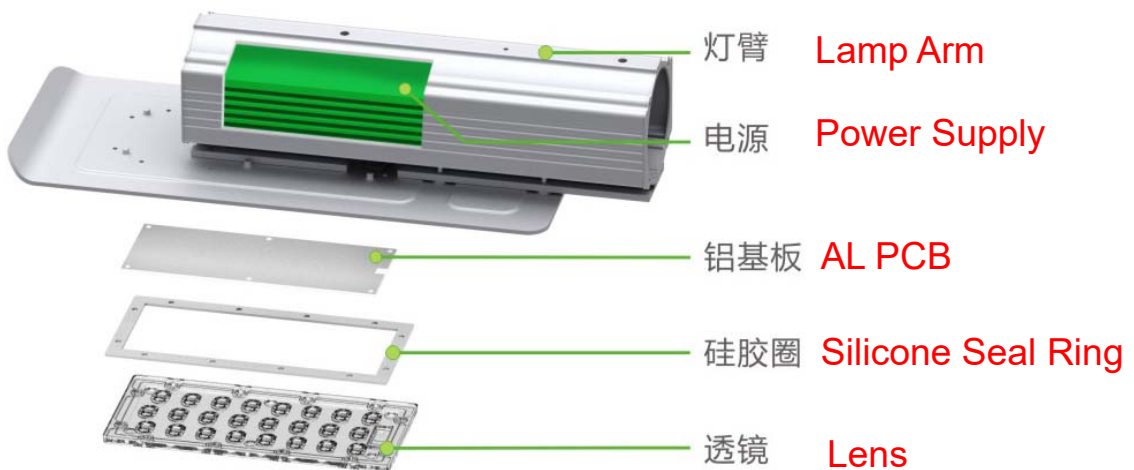


有效平均照度图



平均光束角(50%):120.7度

Product Structure



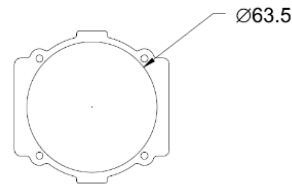
Optional Product Specifications

Item	Name	Model No.	Voltage	Power	Color	LED Qty	Beam Angle
1	LED Street Light	KS.RL.D.90.W.00A	AC90-305V	90W	2800-3200K	77	150°*80°
2	LED Street Light	KS.RL.D.90.N.00A	AC90-305V	90W	3750-4750K	77	150°*80°
3	LED Street Light	KS.RL.D.90.P.00A	AC90-305V	90W	5500-6500K	77	150°*80°

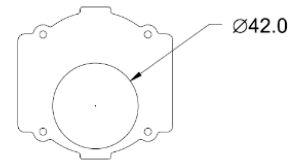
120W - KS.RL120D



根据需求选择60杆或40杆灯臂盖



60杆灯臂盖支持60杆



40杆灯臂盖支持40杆

Features:

- ◆ All aluminum housing for the heat dissipating greatly extends the life span of lighting source.
- ◆ Free of dust and water, suitable for outdoor.
- ◆ Use high quality power supply for long life time.
- ◆ Ultrathin design, convenient for storage, transportation and maintenance.
- ◆ Baking powder technology, bright and fade eventually becoming less susceptible to corrosion.

Application:

- ◆ Widely used in roads, highways, elevated roads, squares, schools, parks, etc.



Technical Parameters (Single Color):

Light Source: High Power LED

Brand: PHILIPS 3030/Epistar 3030 Power: 1W

Qty: 112PCS

Maximum Power: 120W

LED Color: Warm White, Neutral White, Pure White

Beam Angle: 150°80°

Lumen: 90-110lm/w

CRI: 70 Ra or 80 Ra

Input Voltage: AC90~305V/50-60Hz

Drive Mode: Constant Current Drive

Power Cable: 3*1.0 Rubber Cable

IP Rate: IP65

Environment Temperature: -20°C~50°C

Storage Temperature: -40°C~70°C

Life Span: ≥50000 hrs

Structure Parameter:

Lamp Body: Aluminum lamp body casting / surface high temperature coating

Cover Material: PC Lens

Packing Details:

Carton: 41.5*19*14.5, 0.115M³

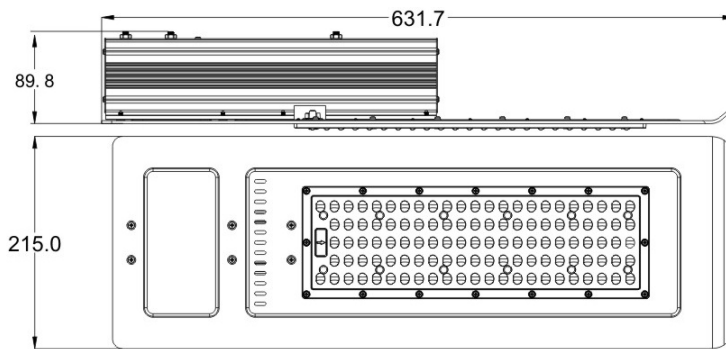
Material: K=K

Qty: 1PCS/CTN

G.W: 2.4KG

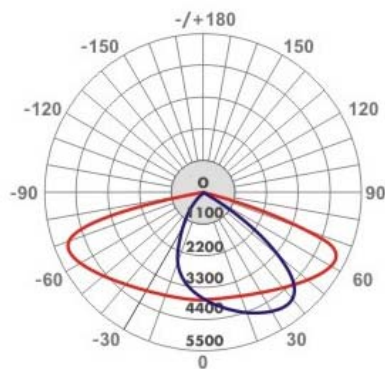
120W - KS.RL120D

Product Dimension

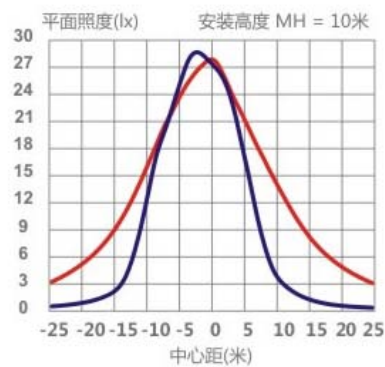


Light Distribution

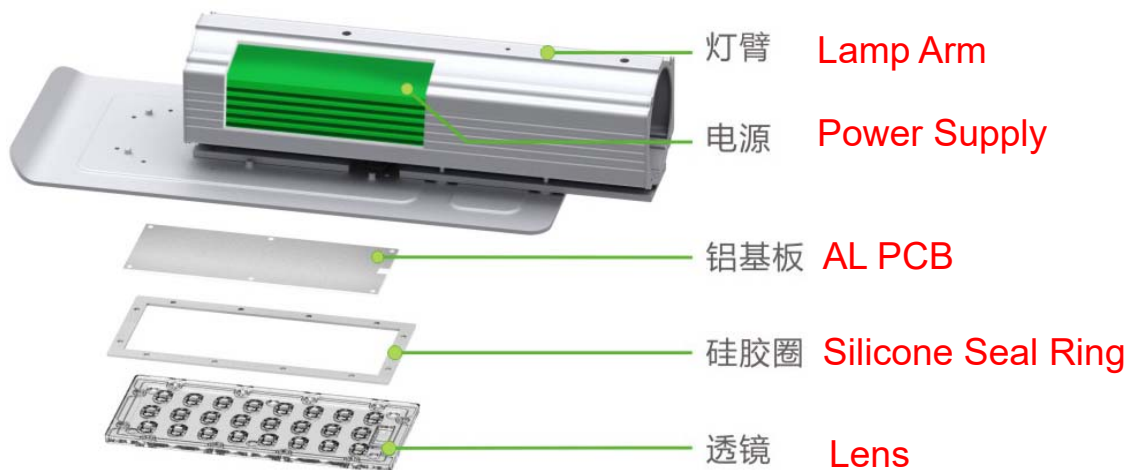
配光曲线图



有效平均照度图



Product Structure 平均光束角(50%):125.3度



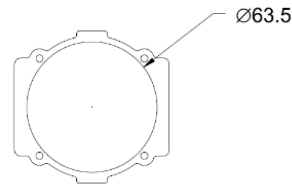
Optional Product Specifications

Item	Name	Model No.	Voltage	Power	Color	LED Qty	Beam Angle
1	LED Street Light	KS.RL.D.120.W.00A	AC90-305V	120W	2800-3200K	112	150*80°
2	LED Street Light	KS.RL.D.120.N.00A	AC90-305V	120W	3750-4750K	112	150*80°
3	LED Street Light	KS.RL.D.120.P.00A	AC90-305V	120W	5500-6500K	112	150*80°

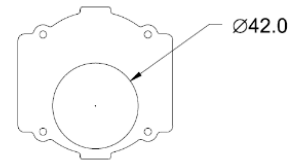
150W - KS.RL150D



根据需求选择60杆或40杆灯臂盖



60杆灯臂盖支持60杆



40杆灯臂盖支持40杆

Features:

- ◆ All aluminum housing for the heat dissipating greatly extends the life span of lighting source.
- ◆ Free of dust and water, suitable for outdoor.
- ◆ Use high quality power supply for long life time.
- ◆ Ultrathin design, convenient for storage, transportation and maintenance.
- ◆ Baking powder technology, bright and fade eventually becoming less susceptible to corrosion.

Application:

- ◆ Widely used in roads, highways, elevated roads, squares, schools, parks, etc.



Technical Parameters (Single Color):

Light Source: High Power LED

Brand: PHILIPS 3030/Epistar 3030 Power: 1W

Qty: 144PCS

Maximum Power: 150W

LED Color: Warm White, Neutral White, Pure White

Beam Angle: 150°80°

Lumen: 90-110lm/w

CRI: 70 Ra or 80 Ra

Input Voltage: AC90~305V/50-60Hz

Drive Mode: Constant Current Drive

Power Cable: 3*1.0 Rubber Cable

IP Rate: IP65

Environment Temperature: -20°C~50°C

Storage Temperature: -40°C~70°C

Life Span: ≥50000 hrs

Structure Parameter:

Lamp Body: Aluminum lamp body casting / surface high temperature coating

Cover Material: PC Lens

Packing Details:

Carton: 68.5*27*14.5, 0.268M³

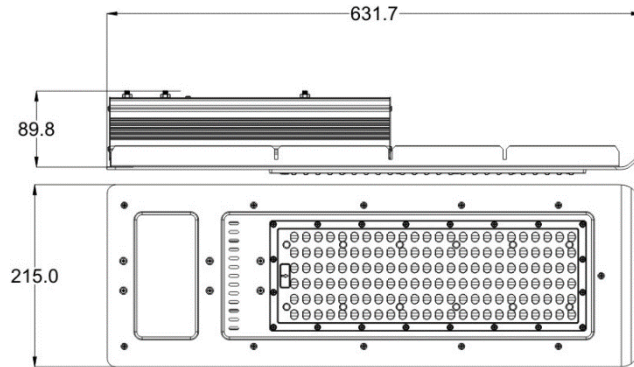
Material: K=K

Qty: 1PCS/CTN

G.W: 7.32KG

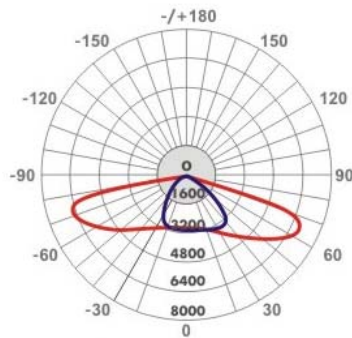
150W - KS.RL150D

Product Dimension

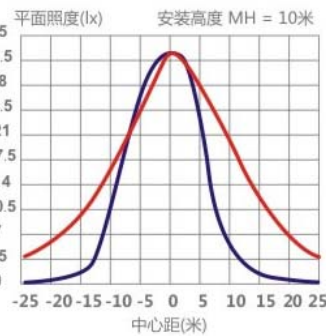


Light Distribution

配光曲线图

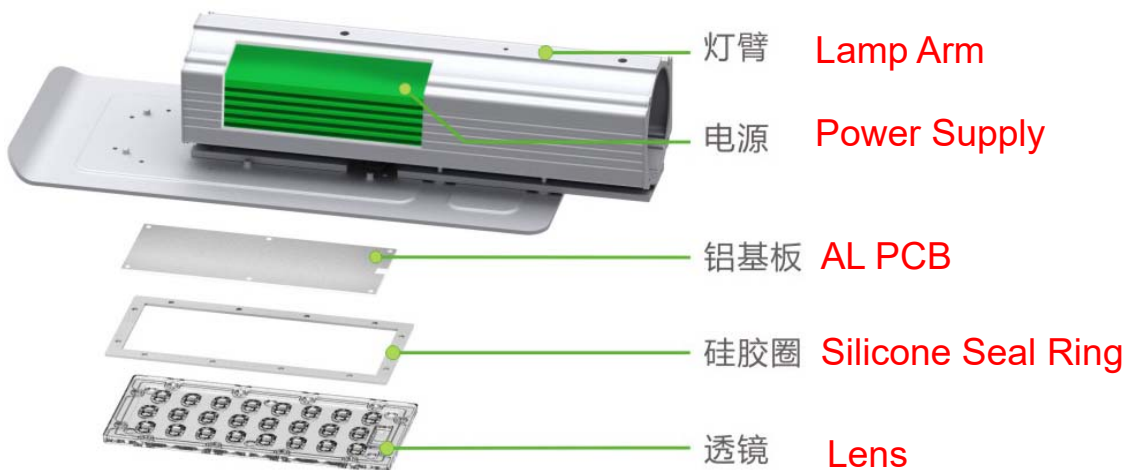


有效平均照度图



平均光束角(50%):125.3度

Product Structure



Optional Product Specifications

Item	Name	Model No.	Voltage	Power	Color	LED Qty	Beam Angle
1	LED Street Light	KS.RL.D.150.W.00A	AC90-305V	150W	2800-3200K	144	150*80°
2	LED Street Light	KS.RL.D.150.N.00A	AC90-305V	150W	3750-4750K	144	150*80°
3	LED Street Light	KS.RL.D.150.P.00A	AC90-305V	150W	5500-6500K	144	150*80°